



Talbot Road, Smethwick, B66 4DT



# Property Description

This well-presented three bedroom terraced property is ideally located on Talbot Road and offers spacious and versatile accommodation throughout.

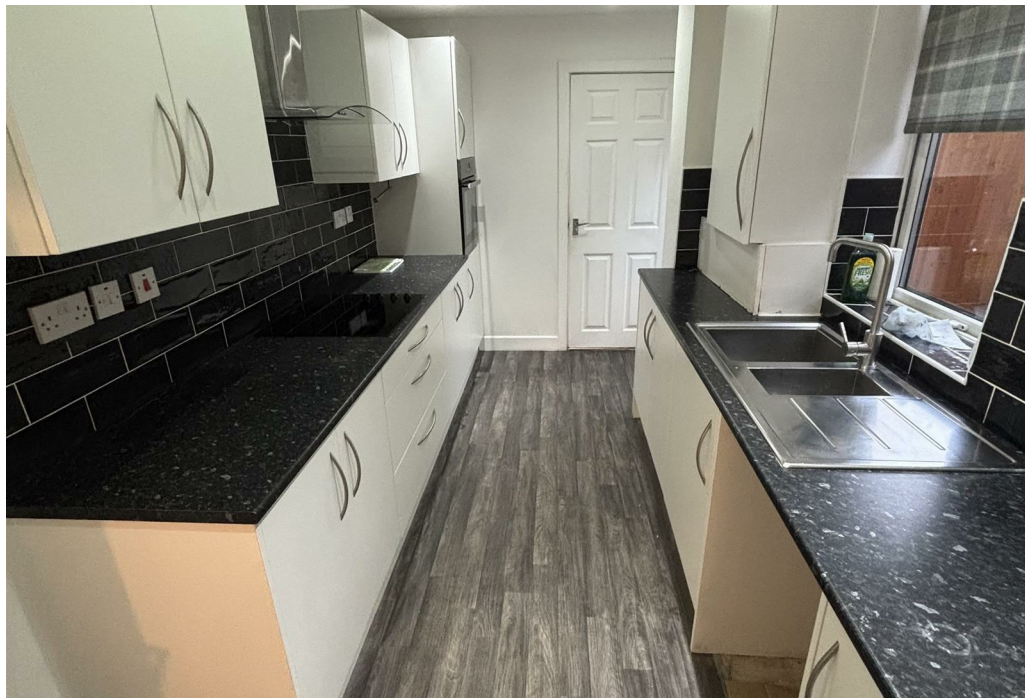
The ground floor comprises two generous reception rooms, separated by double doors, providing flexible living and dining space. To the rear is a modern fitted kitchen featuring stylish white gloss units, offering ample storage and worktop space. A downstairs bathroom fitted with a contemporary white suite completes the ground floor layout.

Upstairs, the property benefits from two well-proportioned double bedrooms and one single bedroom, making it ideal for families or professionals.

The property is conveniently situated close to local amenities, transport links, and schools, making it a practical and comfortable home.







## Key Features

- Three Bedroom Terraced Property
- Two Reception Rooms
- Modern Fitted Kitchen
- Downstairs Bathroom
- Two Double Bedrooms
- Single Bedroom
- EPC Rating: D
- Council Tax Band: B

**£1,200 PCM**